



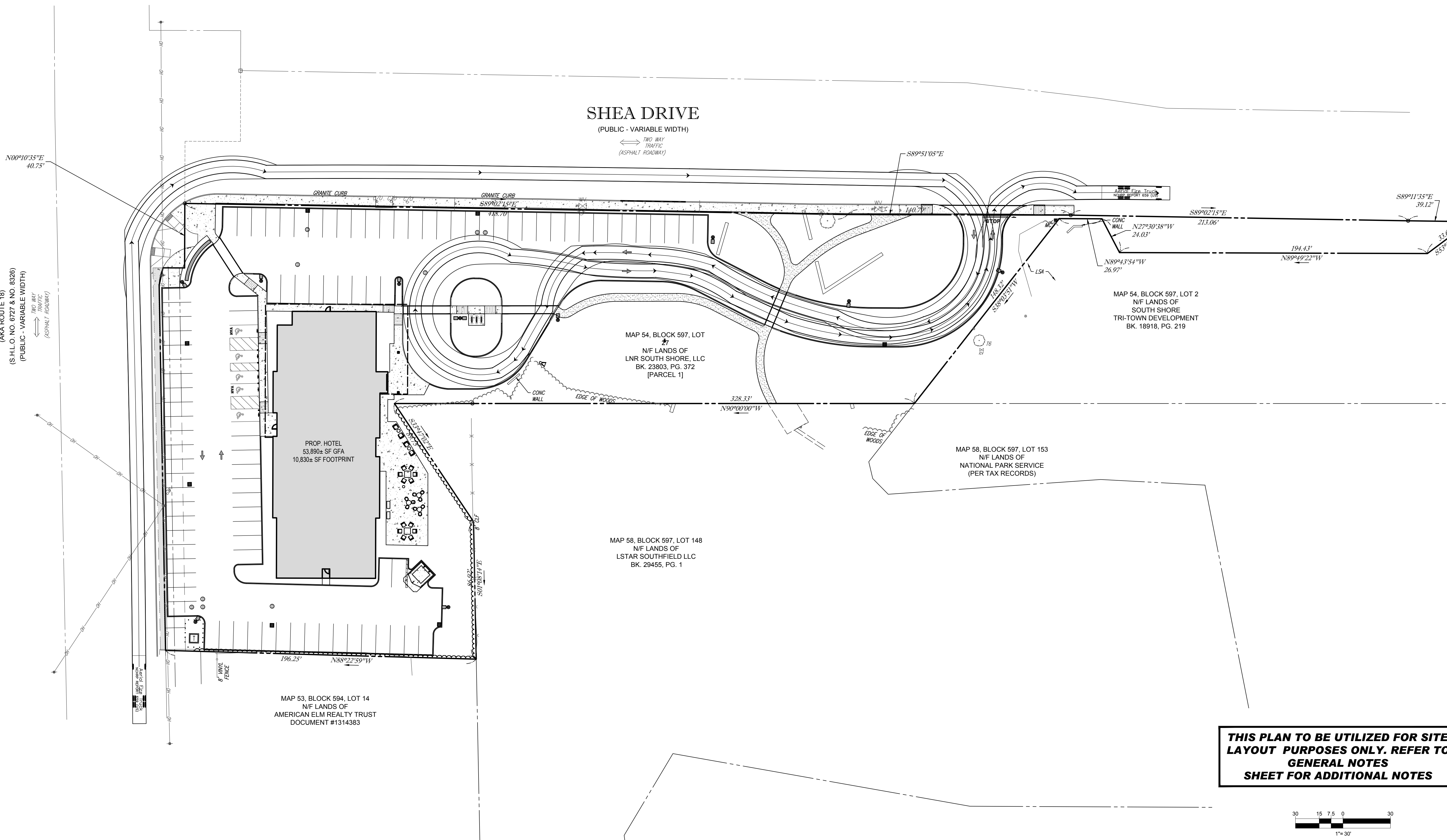
MAIN STREET

(AKA ROUTE 1B)
(S.H.L.O. NO. 6727 & NO. 8328)
(PUBLIC - VARIABLE WIDTH)
TWO WAY TRAFFIC (ASPHALT ROADWAY)

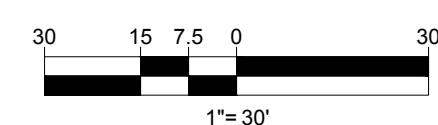
SHEA DRIVE

(PUBLIC - VARIABLE WIDTH)

TWO WAY TRAFFIC (ASPHALT ROADWAY)



THIS PLAN TO BE UTILIZED FOR SITE LAYOUT PURPOSES ONLY. REFER TO GENERAL NOTES SHEET FOR ADDITIONAL NOTES



BOHLER
SITE CIVIL AND CONSULTING ENGINEERING
PROGRAM MANAGEMENT
LANDSCAPE ARCHITECTURE
SUSTAINABLE DESIGN
PERMITTING SERVICES
TRANSPORTATION SERVICES

REVISIONS

REV	DATE	COMMENT	DRAWN BY	CHECKED BY

811
Know what's below.
Call before you dig.
ALWAYS CALL 811
It's fast. It's free. It's the law.

PERMIT SET

THIS DRAWING IS INTENDED FOR MUNICIPAL AND/OR AGENCY REVIEW AND APPROVAL. IT IS NOT INTENDED AS A CONSTRUCTION DOCUMENT UNLESS INDICATED OTHERWISE.

PROJECT No.: W191060
DRAWN BY: NPD
CHECKED BY: RMM
DATE: 07/14/2022
CAD ID: W191060-CVL-0

PROPOSED SITE PLAN DOCUMENTS

FOR

CP ENDEAVOR HOLDINGS 18 LLC
388 EAST EIGHTH STREET
BOSTON, MA 02127
(617) 971-9700

PROPOSED HOTEL DEVELOPMENT
MAP #58, BLOCK #597, LOTS #27 & #147
MAIN STREET & SHEA DRIVE
CITY OF WEYMOUTH
NORFOLK COUNTY, MA

BOHLER

352 TURNPIKE ROAD
SOUTHBOROUGH, MA 01772
Phone: (508) 480-9900
www.BohlerEngineering.com

SHEET TITLE:
FIRE TRUCK TURNING EXHIBIT

SHEET NUMBER:
1

ORG. DATE - 07/14/2022

I:\BOHLER\NET\SHARES\MA\PROJECTS\191060\DRAWINGS\PLAN SETS\REV\191060-CVL-0.dwg - LAYOUT: FIRE TRUCK TURNING EXHIBIT